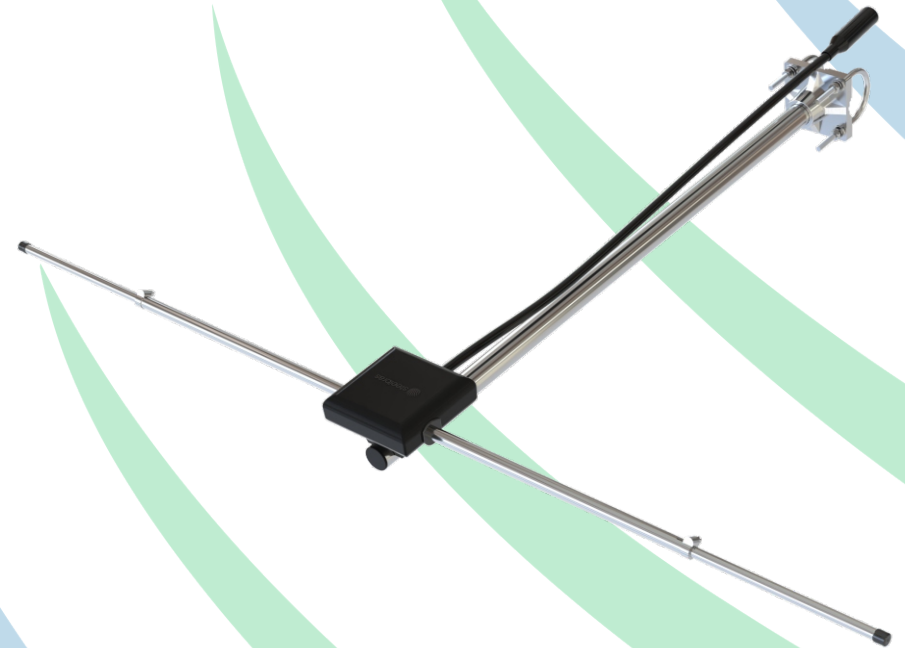


BASE ANTENNA VHF 1/2 WAVE ADJUSTABLE OPEN DIPOLE

AP20017



Av. Cidade Fukuyama, 725 - CEP 19064-210 - Presidente Prudente - SP

www.steelbras.com.br



10/09/2024

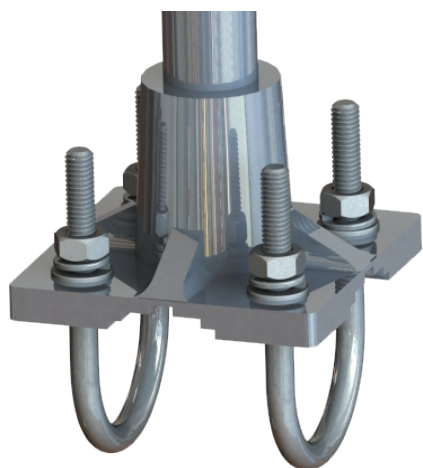


steelbras[®]
soluções em antenas

BASE ANTENNA VHF 1/2 WAVE ADJUSTABLE OPEN DIPOLE

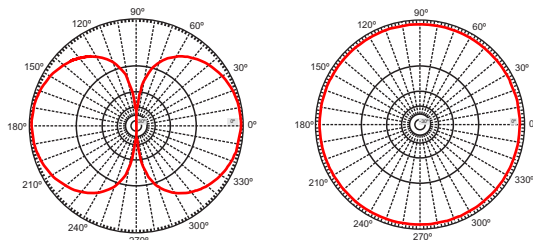
The AP20017 is a VHF omnidirectional antenna of the open dipole type, constructed from high-quality aluminum, UV-treated injected ABS resin, and rubber resistant to ozone, weather, and chemicals. This lightweight antenna is easy to install and can be adjusted to operational requirements by tuning its elements according to the measurements in the table. It features an internationally standardized UHF Female connector and a versatile clamp mount that allows vertical installation. The radiating assembly is hermetically sealed, ensuring optimal performance, extended service life, and high mechanical strength.

The aluminum mount is designed to allow the antenna to be installed both horizontally and vertically.



The mounting clamps are made of stainless steel and come with a flat washer, a lock washer, and a nut, also in stainless steel, ensuring a secure attachment of the mount to pipes up to 51 mm (2 inches) in outer diameter, providing greater durability to the assembly.

SPECIFICATIONS	
VHF	
FREQUENCY	108 - 174 MHz
POLARIZATION	Vertical
MAXIMUM POWER	150 W
IMPEDANCE	50 Ohms
VSWR	≤ 1,5:1
GAIN	2,15 dBi
CONNECTOR	UHF FEMALE
MAXIMUM WIND SPEED	120 km/h
WIDTH (MAXIMUM OPENING)	1351 mm
HEIGHT	750 mm
WEIGHT	980 g



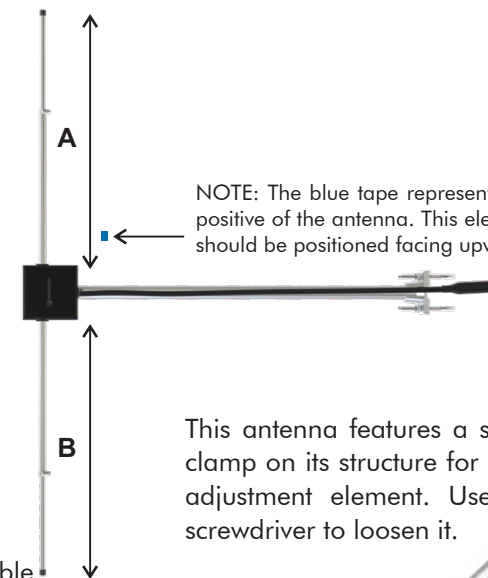
Vertical

Horizontal



TECHNICAL SPECIFICATIONS

Adjustment Table	
Frequência (MHz)	Comprimento A/B (Cm)
108	60
112	58
114	56
116	54
120	52
125	52
132	48
136	46
140	44
146	42
150	40
158	38
164	36
170	34
174	33



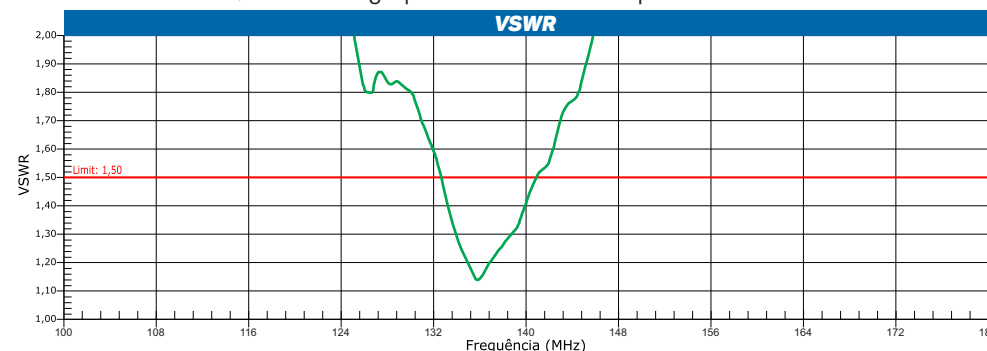
NOTE: The blue tape represents the positive of the antenna. This element should be positioned facing upward.

This antenna features a stainless steel clamp on its structure for fastening the adjustment element. Use a flathead screwdriver to loosen it.



IMPORTANT: The adjustment table measurements are for reference only and may vary depending on the installation location. To achieve the best results, always use a VSWR meter (wattmeter). The reflected signal should not exceed 1.5:1 VSWR or 4% of the forward power.

EXAMPLE: VSWR graph of the AP20017 adjusted to 136 MHz.



IMPORTANT: To achieve the best result, use a VSWR meter.